

*For Proper Buildings*

 **DÜZKİM**  
YAPI KİMYASALLARI



# DÜZKİM

---

## YAPIL KİMYASALLARI



Our company started its activities in the oil business and construction sectors in 1984 and has continued to grow with a business model built on solid foundations. In 2013, it made a strong entry into the building materials sector by starting operations in the field of pumice block production, and quickly achieved a significant position in the industry with its production approach focused on quality, durability, and sustainability.

Our success in the pumice sector has been shaped by our modern production facilities and innovative production approach. We offer high standard solutions to the construction industry by producing environmentally friendly, lightweight, durable pumice products that offer superior performance in thermal insulation. By continuously improving our production processes in line with the principles of customer satisfaction, quality and efficiency, we have become a reliable brand in the industry.

With our new investment in the building chemicals sector as of 2025, we aim to offer more comprehensive and innovative solutions to the construction industry. By developing high-quality and sustainable products in the field of building chemicals, we ensure that buildings are more durable, safer and longer-lasting. By placing great emphasis on R&D and innovation in our production processes, we contribute to the industry with a wide range of products such as waterproofing, adhesives, mortar additives, repair mortars and floor solutions.

Our company will continue to develop innovative solutions in both the pumice and building chemicals sectors by adopting the principles of sustainability and quality. By producing at international standards, we will continue to offer modern, durable and environmentally friendly products to the construction industry and grow with strong business partnerships. By investing in the future, we are taking firm steps towards becoming a leading and reliable brand in the industry.



#### **Mission :**

We offer reliable solutions to the building industry by developing innovative, environmentally friendly and high-quality products in the building chemicals industry. By prioritizing customer satisfaction, we aim to produce durable, efficient and technological solutions for sustainable buildings.

While we make a difference in the sector with our R&D studies and expert staff, we add value to the future with our production approach that is sensitive to nature and human health. By providing services at global standards, we continue to grow with strong business partnerships and contribute to the development of the sector.

#### **Vision :**

To be a leading brand on a global scale by offering innovative and sustainable solutions in the building chemicals industry. To lead the construction industry with environmentally friendly and high-performance products by focusing on R&D and technology.

We aim to be the most preferred brand for sustainable buildings by maximizing customer satisfaction with our reliable, high-quality and innovative solutions. We will continue to work with our understanding of continuous development and innovation to leave more durable, safer and more environmentally friendly living spaces for future generations.

#### **Kalite Politikamız :**

To maximize customer satisfaction, we offer reliable and innovative products that meet high quality standards in the building chemicals industry. We act in accordance with international quality management systems in our production processes and adopt continuous improvement and development as our basic principle.

#### **Our Understanding of Quality :**

- **Customer Focus:** To provide effective solutions to fully meet our customers' needs and expectations.
- **Continuous Improvement:** To continuously improve our production processes and product quality by following technological developments.
- **Environment and Safety:** To adopt an environmentally friendly, human health-protecting and sustainable production approach.
- **Education and Engagement:** To increase quality awareness and strengthen team spirit by supporting the development of our employees.
- **Compliance and Responsibility:** To ensure full compliance with national and international standards, legal regulations and ethical values.
- We constantly review and improve our quality policy to provide the best service to our customers and maintain our reliability in the sector.

#### **Our R\&D Policy :**

We attach great importance to R&D studies to develop innovative and sustainable solutions in the building chemicals industry. By closely following technological developments, we design environmentally friendly, durable and high-performance products.

Our R&D team focuses on analyzing customer needs and producing innovative solutions that add value to the industry. We aim to shape the construction technologies of the future by continuing our work in line with the principles of sustainability, quality and efficiency.



# Düzkim tile adhesive C1TE

## DEFINITION:

It is a cement-based ready-mixed tile adhesive mortar with extended open time, used on walls and floors with reduced slipperiness.

## APPLICATION AREAS:

It is used to bond tile and coating materials on horizontal and vertical surfaces in indoor and outdoor areas.

## SURFACE PREPARATION:

The application surface must be cleaned from foreign materials such as dust, dirt and oil. The water absorption rate of the surface should be low; if the water absorption rate is high, it should be moistened. The application surface must be smooth and stable.

## APPLICATION TOOLS:

Notched trowel, trowel

## HOW TO APPLY:

Add 6 - 6.5 liters of water to the bag in a clean container and mix with a low-speed mixer until it reaches a homogeneous consistency.

It should be rested for approximately 10 minutes before application. The application should be done by mixing again with the mixer for 1-2 minutes.

## APPLICATION FEATURES:

Mixing Ratio: 6 - 6.5 liters

Pot life (at 20°C): 2 Hours

Open waiting time: 30 minutes

Grouting application time: 24 hours

Time to open to traffic: 48 hours

Application temperature: +5°C / +30°C

## PRECAUTIONS:

- Application should be done at temperatures between +5 C and +30 C.
- Application should not be done in rainy weather, the application surface should be protected from rain and liquid.
- The applied surface should not be exposed to direct sunlight in hot weather.
- Application should not be made in windy weather or on surfaces exposed to direct sunlight.
- Application should not be made in places where there is a risk of frost and on frozen and icy surfaces.

- Water should not be added to the mixture later, nor should any other additives be used.
- After mixing the product, the mixture should be used within 60 minutes.

## STORAGE AND SHELF LIFE:

Under dry and cool storage conditions, the shelf life is 12 months from the date of production in its original packaging.

DÜZGÜNLER KİMYASAL YAPI ÜRÜNLERİ SAN. VE TİC. LTD. ŞTİ. shall not be held responsible for any issues arising from the product being used for purposes other than its intended use.

## CLEANING OF THE TOOLS:

All the tools used in the application should be cleaned with plenty of water.

## COLOR:

White  
Gray

Open waiting time, Adhesion strength:	: $\geq 0,5$
Usage Period, Hours	: $< 2$
Adherence Strength / In Dry Environment	: $\geq 0,5$
Adherence Strength / In Wet Environment	: $\geq 0,5$
Adherence Strength / In Hot Environment	: $\geq 0,5$
Adherence Strength / In Cold Environment	: $\geq 0,5$
Slip (mm)	: $\leq 0,5$
Fire response	: A1



**Component name:** Portland cement **H315:** Causes skin irritation. **H318:** Causes serious eye damage, **H335:** May cause respiratory tract irritation. **P264:** Wash your hands thoroughly after handling. **P280:** Wear protective gloves/protective clothing/eye protection/face protection. **P302+P352: IN CASE OF SKIN CONTACT:** Wash with plenty of soap and water. **P332+P313:** Seek medical attention immediately. **P305+P351+P338 IN CASE OF EYE CONTACT:** Rinse cautiously with water for several minutes. Remove contact lenses if present and easy to do. Continue rinsing. **P261:** Avoid breathing dust. **P304+P340: IF INHALED:** Remove the affected person to fresh air and keep them in a comfortable position to breathe.



# Düzkim flex tile adhesive C2TE

## DEFINITION:

It is a cement-based ready-mixed tile adhesive mortar with extended open time, used on walls and floors with reduced slipperiness.

## APPLICATION AREAS:

It is used on mobile floors, surfaces exposed to sudden temperature changes, underpasses and overpasses, shopping malls, underfloor heating systems, and laying tiles and natural stones.

## SURFACE PREPARATION:

The application surface must be cleaned from foreign materials such as dust, dirt and oil. The water absorption rate of the surface should be low; if the water absorption rate is high, it should be moistened. The application surface must be smooth and stable.

## APPLICATION TOOLS:

Notched trowel, trowel

## HOW TO APPLY:

Add 6 - 6.5 liters of water to the bag in a clean container and mix with a low-speed mixer until it reaches a homogeneous consistency.

It should be rested for approximately 10 minutes before application. The application should be done by mixing again with the mixer for 1-2 minutes.

## APPLICATION FEATURES:

Mixing Ratio: 6 - 6.5 liters

Pot life (at 20°C): 2 Hours

Open waiting time: 30 minutes

Grouting application time: 24 hours

Time to open to traffic: 48 hours

Application temperature: +5°C / +30°C

## PRECAUTIONS:

- Application should be done at temperatures between +5 C and +30 C.
- Application should not be done in rainy weather, the application surface should be protected from rain and liquid.
- The applied surface should not be exposed to direct sunlight in hot weather.
- Application should not be made in windy weather or on surfaces exposed to direct sunlight.
- Application should not be made in places where there is a risk of frost and on frozen and icy surfaces.

- Water should not be added to the mixture later, nor should any other additives be used.
- After mixing the product, the mixture should be used within 60 minutes.

## STORAGE AND SHELF LIFE:

Under dry and cool storage conditions, the shelf life is 12 months from the date of production in its original packaging.

DÜZGÜNLER KİMYASAL YAPI ÜRÜNLERİ SAN. VE TİC. LTD. ŞTİ. shall not be held responsible for any issues arising from the product being used for purposes other than its intended use.

## CLEANING OF THE TOOLS:

All the tools used in the application should be cleaned with plenty of water.

## COLOR:

White  
Gray

Open waiting time, Adhesion strength:	: $\geq$ 0,5
Usage Period, Hours	: $<$ 2
Adherence Strength / In Dry Environment	: $\geq$ 0,5
Adherence Strength / In Wet Environment	: $\geq$ 0,5
Adherence Strength / In Hot Environment	: $\geq$ 0,5
Adherence Strength / In Cold Environment	: $\geq$ 0,5
Slip (mm)	: $\leq$ 0,5
Fire response	: A1



**Component name:** Portland cement **H315:** Causes skin irritation. **H318:** Causes serious eye damage, **H335:** May cause respiratory tract irritation. **P264:** Wash your hands thoroughly after handling. **P280:** Wear protective gloves/protective clothing/eye protection/face protection. **P302+P352: IN CASE OF SKIN CONTACT:** Wash with plenty of soap and water. **P332+P313:** Seek medical attention immediately. **P305+P351+P338 IN CASE OF EYE CONTACT:** Rinse cautiously with water for several minutes. Remove contact lenses if present and easy to do. Continue rinsing. **P261:** Avoid breathing dust. **P304+P340: IF INHALED:** Remove the affected person to fresh air and keep them in a comfortable position to breathe.



# Düzkim ultra plus tile adhesive

C2TE S1

## DEFINITION:

It is a cement-based ready-mixed tile adhesive mortar with extended open time, used on walls and floors with reduced slipperiness.

## APPLICATION AREAS:

It is a high-strength adhesive mortar used for bonding large-sized tiles, granite marble, and other coating materials in underfloor heating systems in interior and exterior spaces of buildings such as schools, hospitals, and shopping malls.

## SURFACE PREPARATION:

The application surface must be cleaned from foreign materials such as dust, dirt and oil. The water absorption rate of the surface should be low; if the water absorption rate is high, it should be moistened. The application surface must be smooth and stable.

## APPLICATION TOOLS:

Notched trowel, trowel

## HOW TO APPLY:

Add 6 - 6.5 liters of water to the bag in a clean container and mix with a low-speed mixer until it reaches a homogeneous consistency.

It should be rested for approximately 10 minutes before application. The application should be done by mixing again with the mixer for 1-2 minutes.

## APPLICATION FEATURES:

Mixing Ratio: 6 - 6.5 liters

Pot life (at 20°C): 2 Hours

Open waiting time: 30 minutes

Grouting application time: 24 hours

Time to open to traffic: 24 hours

Application temperature: +5°C / +30°C

## PRECAUTIONS:

- Application should be done at temperatures between +5 C and +30 C.
- Application should not be done in rainy weather, the application surface should be protected from rain and liquid.
- The applied surface should not be exposed to direct sunlight in hot weather.
- Application should not be made in windy weather or on surfaces exposed to direct sunlight.
- Application should not be made in places where there is a risk of frost and on frozen and icy surfaces.

- Water should not be added to the mixture later, nor should any other additives be used.
- After mixing the product, the mixture should be used within 60 minutes.

## STORAGE AND SHELF LIFE:

Under dry and cool storage conditions, the shelf life is 12 months from the date of production in its original packaging.

DÜZGÜNLER KİMYASAL YAPI ÜRÜNLERİ SAN. VE TİC. LTD. ŞTİ. shall not be held responsible for any issues arising from the product being used for purposes other than its intended use.

## CLEANING OF THE TOOLS:

All the tools used in the application should be cleaned with plenty of water.

## COLOR:

White  
Gray

Open waiting time, Adhesion strength:	: $\geq$ 0,5
Usage Period, Hours	: $<$ 2
Adherence Strength / In Dry Environment	: $\geq$ 0,5
Adherence Strength / In Wet Environment	: $\geq$ 0,5
Adherence Strength / In Hot Environment	: $\geq$ 0,5
Adherence Strength / In Cold Environment	: $\geq$ 0,5
Slip (mm)	: $\leq$ 0,5
Fire response	: A1



**Component name:** Portland cement **H315:** Causes skin irritation. **H318:** Causes serious eye damage, **H335:** May cause respiratory tract irritation. **P264:** Wash your hands thoroughly after handling. **P280:** Wear protective gloves/protective clothing/eye protection/face protection. **P302+P352: IN CASE OF SKIN CONTACT:** Wash with plenty of soap and water. **P332+P313:** Seek medical attention immediately. **P305+P351+P338 IN CASE OF EYE CONTACT:** Rinse cautiously with water for several minutes. Remove contact lenses if present and easy to do. Continue rinsing. **P261:** Avoid breathing dust. **P304+P340: IF INHALED:** Remove the affected person to fresh air and keep them in a comfortable position to breathe.



# Düzkim grouts

SILICONE - FLEX GROUTS

## DEFINITION:

It is a cement-based grouting material used for tiles, which is resistant to external factors and contains polymer additives and chemical additives.

## APPLICATION AREAS:

In interior parts of buildings, on horizontal and vertical joints of coverings such as tiles, marble, and natural stone.

## SURFACE PREPARATION:

The joints of coating materials such as tiles, marble and natural stone should be moistened and thoroughly cleaned from dust and other foreign materials before application.

## HOW TO APPLY:

In a clean container, 1 bag of Düzkim Grout is slowly added into 6.5 / 7 liters of water and mixed with a low-speed mixer until a smooth, lump-free paste is obtained. The prepared mixture is left to rest for 5 minutes, then mixed again for a minute or two and the mortar is filled into the joint gaps with the help of a trowel.

Excess is removed by scraping. Depending on the weather conditions, after 15-20 minutes, clean with a wet sponge without applying too much pressure to the surface.

## PRECAUTIONS:

- Never add water or powder to expired mortar.
- Avoid applying in areas that are frozen, have a risk of freezing within 24 hours, or are exposed to direct sun and wind.
- Application under sun and strong wind should be avoided. Application must be made when the surface temperature is between +5°C and +35°C.
- If snowfall or severe cold is expected within approximately 1 week after application, application should not be made or protective measures should be taken.
- Make sure that the coatings are applied at least 24 hours before and the tile adhesive has hardened.
- Before application, joint gaps should be moistened with a sponge.

- Before grouting, dust, sawdust, and construction cement residues that may be present between the joint gaps must be cleaned.
- It is recommended to use protective gloves during applications.

## STORAGE AND SHELF LIFE:

Under dry and cool storage conditions, the shelf life is 12 months from the date of production in its original packaging. DÜZGÜNLER KİMYASAL YAPI ÜRÜNLERİ SAN. VE TİC. LTD. ŞTİ. shall not be held responsible for any issues arising from the product being used for purposes other than its intended use.

## CLEANING OF THE TOOLS:

All the tools used in the application should be cleaned with plenty of water.

## COLOR:

White  
Gray  
Light Gray  
(Special colors upon request)

Color	: White and different colors
Application temperature	: +5 °C to +35 °C (ambient ground temperature)
Mixing ratio	: 6.5-7 liters of water for 20 kg (bag) dry mortar
Pot life	: 1 hours
Time to Put into Use	: 2 days
Bending strength	: >2.5 N/mm <sup>2</sup> .
Compressive Strength	: >15 N/mm <sup>2</sup> .
Shrinkage	: <3 mm / meter
Water Absorption	: <5 g (Grout 1-6 mm) / <10 g (Grout 1-6 mm)
30 min / 240 min	
Temperature resistance	: -30 °C / +80 °C
Packaging	: 20 kg Kraft bag



Avoid contact with skin and eyes as it contains cement. Wash the affected areas thoroughly with plenty of water. The product should not be inhaled directly. Use a dust mask when necessary. **R37/38**: Irritates the respiratory system. **R41**: Risk of serious damage to eyes **R43**: May cause sensitization in contact with skin. **S2**: Keep the products out of reach of children. **S22**: Do not breathe dust. **S24/25**: Avoid contact with eyes and skin. **S26**: In case of contact with eyes, rinse immediately with plenty of water and consult a doctor. **S37/39**: Wear suitable protective gloves, eye protection/mask. **S46**: If swallowed, consult a doctor immediately.

\* The values in the table are taken from an environment with +20°C and 50% relative humidity.  
\* At low temperatures, the time is extended, at high temperatures, the time is shortened.



# Düzkim aerated concrete adhesive

## DEFINITION:

It is a cement based, chemically added, high performance aerated concrete masonry mortar.

## APPLICATION AREAS:

On the interior and exterior facades of buildings, It is used in the laying of building elements such as aerated concrete, exposed concrete, pumice and brick.

## SURFACE PREPARATION:

The application surface must be clean and dry. Broken and hollow areas on the surface should be repaired with appropriate mortars.

## HOW TO APPLY:

In a clean container, 1 bag of Düzkim Aerated Concrete Adhesive is slowly added into 6 / 6.5 liters of water and mixed with a low-speed mixer until a smooth, lump-free paste is obtained. The prepared mixture should be left to rest for 5-10 minutes, then mixed again for a minute or two and the prepared mortar should be applied evenly to the surface with a notched trowel.

During application, horizontal and vertical joints must be maximum 3 mm. Aerated concrete should be fixed by ramming from the top and sides.

## PRECAUTIONS:

- Never add water or powder to expired mortar.
- Avoid applying in areas that are frozen, have a risk of freezing within 24 hours, or are exposed to direct sun and wind.
- Application under sun and strong wind should be avoided. Application must be made when the surface temperature is between +5°C and +35°C.
- If snowfall or severe cold is expected within approximately 1 week after application, application should not be made or protective measures should be taken.

## STORAGE AND SHELF LIFE:

Under dry and cool storage conditions, the shelf life is 12 months from the date of production in its original packaging.

DÜZGÜNLER KİMYASAL YAPI ÜRÜNLERİ SAN. VE TİC. LTD. ŞTİ. shall not be held responsible for any issues arising from the product being used for purposes other than its intended use.

## CLEANING OF THE TOOLS:

All the tools used in the application should be cleaned with plenty of water.

Color	: Grey
Application temperature	: +5°C to +35°C
Mixing ratio	: 6.5-7 liters of water for 25 kg (bag) dry mortar
Pot life	: 1 hours
Temperature resistance	: (-30°C)-(+80°C)
Compressive Strength	: $\geq 15$ N/mm <sup>2</sup>
Water Absorption kg/m <sup>2</sup> -min0.5	: $\leq 2.5$
Water Vapor Permeability	: 5/20
Coefficient ( $\mu$ )	
Application thickness	: 3-10 mm
Fire response	: Class A1
Packaging	: 25 kg Kraft bag
Shelf life	: 12 months



Avoid contact with skin and eyes as it contains cement. Wash the affected areas thoroughly with plenty of water. The product should not be inhaled directly. Use a dust mask when necessary. **R37/38**: Irritates the respiratory system. **R41**: Risk of serious damage to eyes **R43**: May cause sensitization in contact with skin. **S2**: Keep the products out of reach of children. **S22**: Do not breathe dust. **S24/25**: Avoid contact with eyes and skin. **S26**: In case of contact with eyes, rinse immediately with plenty of water and consult a doctor. **S37/39**: Wear suitable protective gloves, eye protection/mask. **S46**: If swallowed, consult a doctor immediately.

\* The values in the table are taken from an environment with +20°C and 50% relative humidity.  
\* At low temperatures, the time is extended, at high temperatures, the time is shortened.



# Düzkim

## thermal insulation board adhesive

### DEFINITION:

It is the adhesive mortar for cement-based polymer-added thermal insulation boards. It is used to bond EPS, XPS and rock wool boards.

### APPLICATION AREAS:

It is used in the interior and exterior thermal insulation of buildings and in bonding the boards on surfaces such as concrete, rough and fine plaster.

### SURFACE PREPARATION:

The application surface must be cleaned from foreign materials such as dust, dirt and oil. The water absorption rate of the surface should be low; if the water absorption rate is high, it should be moistened. The application surface must be smooth and stable.

### HOW TO APPLY:

Add 6 - 6.5 liters of water to the bag in a clean container and mix with a low-speed mixer until it reaches a homogeneous consistency.

It should be rested for approximately 10 minutes before application. The application should be done by mixing again with the mixer for 1-2 minutes.

### PRECAUTIONS:

- Application should be done at temperatures between +5 C and +30 C.
- Application should not be done in rainy weather, the application surface should be protected from rain and liquid.
- The applied surface should not be exposed to direct sunlight in hot weather.
- Application should not be made in windy weather or on surfaces exposed to direct sunlight.
- Application should not be made in places where there is a risk of frost and on frozen and icy surfaces.
- Water should not be added to the mixture later, nor should any other additives be used.
- After mixing the product, it should be used within 60 minutes.

### STORAGE AND SHELF LIFE:

Under dry and cool storage conditions, the shelf life is 12 months from the date of production in its original packaging.

DÜZGÜNLER KİMYASAL YAPI ÜRÜNLERİ SAN. VE TİC. LTD. ŞTİ. shall not be held responsible for any issues arising from the product being used for purposes other than its intended use.

### CLEANING OF THE TOOLS:

All the tools used in the application should be cleaned with plenty of water.

Color	: Grey
Application temperature	: (+5 °C) - (+30 °C)
Mixing ratio	: 6.5-7 liters of water for 25 kg (bag) dry mortar
Temperature resistance	: (-30°C) - (+60°C)
The time required for plastering after application (hours)	: 24 hours
The void unit volume mass of the adhesive	: $\geq 1300$ kg/m <sup>3</sup>
Compressive Strength	: $\geq 6.0$ N/mm <sup>2</sup>
Bending strength	: $\geq 2.0$ N/mm <sup>2</sup>
Adhesion strength to the substrate	: $\geq 0.5$ N/mm <sup>2</sup>
Adhesion strength to thermal insulation board	: $\geq 0.08$ N/mm <sup>2</sup>
Water absorption	: $\leq 5$ grams (30 minutes) $\leq 10$ grams (240 minutes)
Fire response class	: A1
Pot life	: 1 hours
Shelf life	: 12 months



**Component name:** Portland cement **H315:** Causes skin irritation. **H318:** Causes serious eye damage, **H335:** May cause respiratory tract irritation. **P264:** Wash your hands thoroughly after handling. **P280:** Wear protective gloves/protective clothing/eye protection/face protection. **P302+P352: IN CASE OF SKIN CONTACT:** Wash with plenty of soap and water. **P332+P313:** Seek medical attention immediately. **P305+P351+P338 IN CASE OF EYE CONTACT:** Rinse cautiously with water for several minutes. Remove contact lenses if present and easy to do. Continue rinsing. **P261:** Avoid breathing dust. **P304+P340: IF INHALED:** Remove the affected person to fresh air and keep them in a comfortable position to breathe.

\* The values in the table are taken from an environment with +20°C and 50% relative humidity.  
\* At low temperatures, the time is extended, at high temperatures, the time is shortened.



# Düzkim thermal insulation board plaster

## DEFINITION:

It is a cement-based, polymer-added high-performance plaster mortar.

## APPLICATION AREAS:

It is used in the coating of thermal insulation boards such as EPS, XPS, and rock wool.

## SURFACE PREPARATION:

The board surface must be clean, dry, and solid. Make sure that the board adheres completely to the surface. The plastering process should be started 48 hours after the thermal insulation boards are attached.

## HOW TO APPLY:

In a clean container, 1 bag of Düzkim thermal insulation board plaster (25 kg) is slowly added into 6–6.5 kg of water and mixed with a low-speed mixer until a smooth, lump-free paste is obtained. The prepared mixture is left to rest for 10 minutes, then mixed again for a minute or two and the plaster mortar is applied to the doweled EPS board surface with a

suitable trowel. Then, the mesh surface is completely covered with a second layer of plaster. Plaster Reinforcement Mesh is placed smoothly and evenly across the entire board, overlapping 10 cm from the joints, and embedded into the plaster by 1-1.5 mm. After the plaster has set, Düzkim Decorative Plaster is used to add direct paint or a decorative appearance, depending on the application. The plaster surface should be moistened occasionally to ensure healthy setting of the plaster above  $\geq +25$  °C and to prevent sudden water loss. Application should not be made under direct sunlight, in rainy weather or in weather with danger of frost.

## PRECAUTIONS:

- Never add water or powder to expired mortar.
- Avoid applying in areas that are frozen, have a risk of freezing within 24 hours, or are exposed to direct sun and wind.
- Application under sun and strong wind should be avoided. Application must be made when the surface temperature is between +5°C and +35°C.

- If snowfall or severe cold is expected within approximately 1 week after application, application should not be made or protective measures should be taken.
- It is not recommended to apply plaster thicker than 5 mm.
- The thermal insulation boards to be applied must be firmly adhered and doweled to the applied surface. Boards should be checked before application and should never be stretched.
- It is recommended to use protective gloves during applications. For more detailed protective measures, please refer to the material safety data sheet of the product.
- Be careful not to use boards that have lost their properties due to prolonged exposure to sunlight.

## STORAGE AND SHELF LIFE:

Under dry and cool storage conditions, the shelf life is 12 months from the date of production in its original packaging.

DÜZGÜNLER KİMYASAL YAPI ÜRÜNLERİ SAN. VE TİC. LTD. ŞTİ. shall not be held responsible for any issues arising from the product being used for purposes other than its intended use.

## CLEANING OF THE TOOLS:

All the tools used in the application should be cleaned with plenty of water.

Color	: Grey
Content of the material	: It contains cement, mineral fillers and special polymer additives.
Porous Unit Volume Mass of Fresh Mortar	: $\geq 1200$ kg/m <sup>3</sup>
Porous Unit Volume Mass of Hardened Mortar	: $1300 \pm 100$ kg/m <sup>3</sup>
Adhesion Strength to Thermal Insulation Board	: $\geq 0.08$ N/mm <sup>2</sup> (28 days)
Bending strength	: $\geq 2.0$ N/mm <sup>2</sup>
Compressive Strength	: $\geq 6.0$ N/mm <sup>2</sup>
Grain Size	: $< 1$ mm
Water Absorption	: $\leq 5$ gr
Fire Response	: Class A1
Application Thickness	: Minimum 3 mm - Maximum 8 mm
Maturation Time	: min. 5 minutes
Temperature Resistance	: -30°C / +80°C
Pot life	: 1 hours
Shelf life	: 12 months

\* The values in the table are taken from an environment with +20°C and 50% relative humidity.  
\* At low temperatures, the time is extended, at high temperatures, the time is shortened.



Avoid contact with skin and eyes as it contains cement. Wash the affected areas thoroughly with plenty of water. The product should not be inhaled directly. Use a dust mask when necessary. **R37/38**: Irritates the respiratory system. **R41**: Risk of serious damage to eyes **R43**: May cause sensitization in contact with skin. **S2**: Keep the products out of reach of children. **S22**: Do not breathe dust. **S24/25**: Avoid contact with eyes and skin. **S26**: In case of contact with eyes, rinse immediately with plenty of water and consult a doctor. **S37/39**: Wear suitable protective gloves, eye protection/mask. **S46**: If swallowed, consult a doctor immediately.



# Düzkim decorative plaster

## DEFINITION:

It is a final layer exterior decorative coating material reinforced with cement-based chemical additives, resistant to water, moisture and frost, used on the exterior facades of buildings and in thermal insulation systems.

## APPLICATION AREAS:

It is used as the final layer decorative material of thermal insulation board covering plates such as EPS, XPS, Rockwool, on the walls and ceilings of interior and exterior spaces in all buildings.

## SURFACE PREPARATION:

The surface to be applied must be clean and clear of all kinds of dirt, oil, construction dust, mold oils, etc. Plastered surfaces should be cleaned with a brush to prevent dust. The application surface must be thoroughly saturated with water to prevent rapid water loss of the material. If rapid water loss is observed in the material during application, precautions must be taken.

## HOW TO APPLY:

In a clean container, 1 bag of Düzkim Decorative Plaster (25 kg) is slowly added into 6–6.5 liters of clean water and mixed with a low-speed mixer until a homogeneous, lump-free mixture is obtained accordingly. The prepared mixture is left to rest for 10 minutes, then mixed again for another one to two minutes and spread evenly over the surface using a steel trowel. The application thickness should be adjusted according to the pattern stone and the pattern should be given to the surface with a plastic trowel using circular movements. This operation should always be done while the decorative plaster is wet. If the pattern does not form on the plaster surface, it is too late for the cloverleaf. Patterns can be given by wetting the plaster surface.

## PRECAUTIONS:

- Application under sun and strong wind should be avoided.
- Application should be made in surface temperatures between +5°C and +25°C.
- Never add water or powder to expired mortar.

- If the surface temperature is above +25°C, the appropriate temperature required for plastering must be waited.
- Plaster should not be applied to surfaces that may be in danger of freezing within 24 hours.
- In the final coat applications of cladding systems, it must be ensured that the boards are firmly adhered to the surface and the plaster applied on them is completely dry.
- If possible, apply without interruption; if a break is necessary, divide the surface into areas of approximately 20 m<sup>2</sup> and apply separately.
- Apply the plastic finishing trowel within 10 minutes at the latest and do not allow a film layer to form on the plaster.

## STORAGE AND SHELF LIFE:

Under dry and cool storage conditions, the shelf life is 12 months from the date of production in its original packaging.

DÜZGÜNLER KİMYASAL YAPI ÜRÜNLERİ SAN. VE TİC. LTD. ŞTİ. shall not be held responsible for any issues arising from the product being used for purposes other than its intended use.

## CLEANING OF THE TOOLS:

All the tools used in the application should be cleaned with plenty of water.

Color	: White
Water Mixing Ratio	: 6 – 6.5 liters water / 25 kg powder
Resting Time	: 5 minutes
Pot Life	: 1 hours
Application Temperature	: +5°C to +35°C
CO Permeability	: C0
Crack Covering Feature	: A0
Dry Film Thickness	: E5
Grain Size	: S3
Water Vapor Transfer Rate	: V2
Water Transfer Rate	: W2
Application Thickness	: ~ 1,5-2 mm
Time Required to Open the Ground to Traffic	: 24 hours
Color	: White



Avoid contact with skin and eyes as it contains cement. Wash the affected areas thoroughly with plenty of water. The product should not be inhaled directly. Use a dust mask when necessary. **R37/38**: Irritates the respiratory system. **R41**: Risk of serious damage to eyes **R43**: May cause sensitization in contact with skin. **S2**: Keep the products out of reach of children. **S22**: Do not breathe the dust. **S24/25**: Avoid contact with eyes and skin. **S26**: In case of contact with eyes, rinse immediately with plenty of water and consult a doctor. **S37/39**: Wear suitable protective gloves, eye protection/mask. **S46**: If swallowed, consult a doctor immediately.

\* The above values are the times given for 23 ± 2°C and 50 ± 5% relative humidity environment.  
\* At low temperatures, the time is extended, at high temperatures, the time is shortened.



# Düzkim pumice adhesive

## DEFINITION:

It is a cement-based, polymer-added, highly stable pumice and brick mortar.

## APPLICATION AREAS:

It is used to bond building elements such as pumice and brick in interior and exterior spaces.

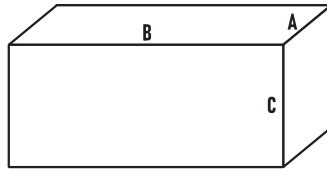
## SURFACE PREPARATION:

The application surface must be cleaned from foreign materials such as dust, dirt and oil. The water absorption rate of the surface should be low; if the water absorption rate is high, it should be moistened. The application surface must be smooth and stable.

## HOW TO APPLY:

In a clean container, water is added to the Düzkim Pumice Adhesive bag at a ratio of 4.5 – 5.5 liters and mixed with a low-speed mixer until a homogeneous consistency is achieved. It should be rested for approximately 5 minutes before application. It should be mixed again with a mixer for 1–2 minutes to become ready for application.

## CONSUMPTION:



A (CM)	B (CM)	C (CM)	Consumption (kg/m <sup>2</sup> )
10	38	18,5	5,5-7,5
15	38	18,5	6,5-8,5
20	38	18,5	7,5-9,5
25	38	18,5	11,5-13,5

\*Consumption value is theoretical. The amount of consumption varies depending on the surface to be applied.

## PRECAUTIONS:

- Application should be done at temperatures between +5 C and +30 C.
- Application should not be done in rainy weather, the application surface should be protected from rain and liquid.
- The applied surface should not be exposed to direct sunlight in hot weather.

- Application should not be made in windy weather or on surfaces exposed to direct sunlight.
- Application should not be made in places where there is a risk of frost and on frozen and icy surfaces.
- Water should not be added to the mixture later, nor should any other additives be used.
- After mixing the product, the mixture should be used within 60 minutes.

## STORAGE AND SHELF LIFE:

Under dry and cool storage conditions, the shelf life is 12 months from the date of production in its original packaging.

DÜZGÜNLER KİMYASAL YAPI ÜRÜNLERİ SAN. VE TİC. LTD. ŞTİ. shall not be held responsible for any issues arising from the product being used for purposes other than its intended use.

## CLEANING OF THE TOOLS:

All the tools used in the application should be cleaned with plenty of water.

Color / Appearance	: Grey
Dust Density	: 1.45 kg/lit
Rest Period	: 5-10 minutes
Water Ratio	: 4.5-5.5 lt / 25 kg powder
Adhesion Strength	: $\geq 0.5$ N / mm <sup>2</sup>
Tensile Strength	: $\geq 0.5$ N / mm <sup>2</sup>
Application Degree	: +5° to 35°
Poi Time	: 1 Hours
Consumption	: 3.5-4 Kg/m <sup>2</sup>



**Component name:** Portland cement **H315:** Causes skin irritation. **H318:** Causes serious eye damage, **H335:** May cause respiratory tract irritation. **P264:** Wash your hands thoroughly after handling. **P280:** Wear protective gloves/protective clothing/eye protection/face protection. **P302+P352: IN CASE OF SKIN CONTACT:** Wash with plenty of soap and water. **P332+P313:** Seek medical attention immediately. **P305+P351+P338 IN CASE OF EYE CONTACT:** Rinse cautiously with water for several minutes. Remove contact lenses if present and easy to do. Continue rinsing. **P261:** Avoid breathing dust. **P304+P340: IF INHALED:** Remove the affected person to fresh air and keep them in a comfortable position to breathe.



# Düzkim self-leveling screed

## DEFINITION:

It is a self-leveling screed containing cement-based modified additives and has high abrasion and pressure resistance.

## APPLICATION AREAS:

It is used to level the surface before laying products such as tiles, marble, wood and parquet under laminate-like coverings, on underfloor heated floors, in places open to light traffic such as shopping malls, hospitals, educational institutions etc.

## SURFACE PREPARATION:

The surface to be applied must be clean and clear of all kinds of dirt, oil, construction dust, mold oils, etc. Necessary repairs on old floors should be made with appropriate repair mortars. If the application is to be done on new concrete, the concrete must have sufficiently settled and gained its strength. In hot weather applications (if the surface temperature is above +25°C), the surface should be wetted 1-2 days in advance to ensure the appropriate temperature.

## HOW TO APPLY:

In a clean container, water is added to the Düzkim Pumice Adhesive bag at a ratio of 4.5 – 5.5 liters and mixed with a low-speed mixer until a homogeneous consistency is achieved. It should be rested for approximately 5 minutes before application. It should be mixed again with a mixer for 1–2 minutes to become ready for application.

## PRECAUTIONS:

- Avoid application at temperatures below +5°C and above +35°C.
- Avoid applying in areas that are frozen, have a risk of freezing within 24 hours, or are exposed to direct sun and wind.
- If the surface temperature is above +25°C, the appropriate temperature required for the mortar should be waited for.
- It is not applied on floors that will be exposed to a lot of movement (mezzanine floors, stair steps) and very heavy traffic (factory floors, industrial floors, heavy-duty workshops, etc.).

- It is not a finishing material. It should not be left uncovered after application.
- It should be waited at least 3 days for the surface to be covered.
- Not suitable for slopes greater than 1%.
- Application thickness should be maximum 10 mm for a single layer. Layer application can be done.
- On old concrete surfaces, apply with surface repairs and a primer layer.

## STORAGE AND SHELF LIFE:

Under dry and cool storage conditions, the shelf life is 12 months from the date of production in its original packaging.

DÜZGÜNLER KİMYASAL YAPI ÜRÜNLERİ SAN. VE TİC. LTD. ŞTİ. shall not be held responsible for any issues arising from the product being used for purposes other than its intended use.

## CLEANING OF THE TOOLS:

All the tools used in the application should be cleaned with plenty of water.

## CONSUMPTION:

1.6-1.8 kg/m<sup>2</sup> for 1 mm thickness. Consumption value is theoretical. The amount of consumption varies depending on the surface to be applied.

Color	: Grey
Water Mixing Ratio	: 5 liters water / 25 kg powder
Resting Time	: 5- 10 minutes
Pot Life	: ~ 15– 20 minutes
Application Temperature	: +5°C to +35°C
Dry Density	: 1400 ± 100 kg/m <sup>3</sup>
Mortar Density	: 1900 ± 100 kg/m <sup>3</sup>
Wear Resistance to Spinning Wheels	: ≤ 1 cm <sup>3</sup> 28 Days
Compressive Strength	: ≥ 25 N/mm <sup>2</sup> 28 Days
Bending Strength	: ≥ 7 N/mm <sup>2</sup> 28 Days
Time Required to Open the Ground to Traffic	: 24 hours

\* The above values are the times given for 23 ± 2 C and 50 ± 5% relative humidity environment.  
\* At low temperatures, the time is extended, at high temperatures, the time is shortened.



Avoid contact with skin and eyes as it contains cement. Wash the affected areas thoroughly with plenty of water. The product should not be inhaled directly. Use a dust mask when necessary. **R37/38:** Irritates the respiratory system. **R41:** Risk of serious damage to eyes **R43:** May cause sensitization in contact with skin. **S2:** Keep the products out of reach of children. **S22:** Do not breathe the dust. **S24/25:** Avoid contact with eyes and skin. **S26:** In case of contact with eyes, rinse immediately with plenty of water and consult a doctor. **S37/39:** Wear suitable protective gloves, eye protection/mask. **S46:** If swallowed, consult a doctor immediately.



# Düzkim floor hardener

## DEFINITION:

It is a wear-resistant, powder surface hardener made of a mixture of special type cement aggregate and specially selected chemical additives for fresh concrete surfaces. Provides resistance to wear, impact, dust and abrasion against light and medium loads on concrete surfaces.

## APPLICATION AREAS:

- Indoor and outdoor areas,
- At gas stations,
- In mechanical workshops,
- In the flooring of industrial facilities,
- In loading and unloading areas,
- In parks and gardens, pedestrian paths and sidewalks.

## SURFACE PREPARATION:

The fresh concrete to be applied must contain sufficient cement and must be wet enough for the Düzkim Floor Hardener to absorb the moisture it needs. If the consistency of the concrete on the application surface is too solid, the surface cannot absorb the water necessary for the hardener reaction and therefore hardening does not occur. If the consistency is too watery, the surface hardener will penetrate into the poured concrete and the desired result will not be achieved.

## HOW TO APPLY:

Düzkim Surface Hardener is sprinkled onto the surface manually or with appropriate tools at a rate of 4.5 – 5 kg per m<sup>2</sup> of product and distributed homogeneously. In order to prevent the product from deteriorating its structure and clumping, sprinkling should not be done from a long distance. Wait until the sprinkled material is wetted equally at every point on the surface. The material, which changes color after absorbing water, is combined with concrete by surface treatment with a helicopter. For the surface smoothing process, knife polishing is done at low speed and angle, and the surface is made shiny with knife polishing at the desired rate.

## PRECAUTIONS:

- Water should not be thrown on the material during application.
- Avoid application at temperatures below +5°C and above +35°C.
- Avoid applying in areas that are frozen, have a risk of freezing within 24 hours, or are exposed to direct sun and wind.
- Excessive finishing should not be done, and the product should not be thrown far during application to prevent the separation of the aggregate from the cement.

- The surface should not be polished with a steel trowel or tray before applying Düzkim Floor Hardener.
- In correct applications, the ambient humidity is between 40 - 80% relative humidity. At low relative humidity, surface efflorescence may occur, at high relative humidity, surface sweating, slower curing and hardening may occur, and prolonged application may be required.

## STORAGE AND SHELF LIFE:

Under dry and cool storage conditions, the shelf life is 12 months from the date of production in its original packaging.

DÜZGÜNLER KİMYASAL YAPI ÜRÜNLERİ SAN. VE TİC. LTD. ŞTİ. shall not be held responsible for any issues arising from the product being used for purposes other than its intended use.

## CLEANING OF THE TOOLS:

All the tools used in the application should be cleaned with plenty of water.

## CONSUMPTION:

At light and medium loads: 4.5 - 5 kg/m<sup>2</sup> (2- 3mm thickness)

## COLOR:

Gray  
Red

Color	: Gray, Red
Consumption	: 4-6 kg/m <sup>2</sup> (2-3 mm thickness)
Application Temperature	: +5°C to +35°C
Abrasion Resistance	: ≤ 3000 mg [ 1000 rpm, 1000 g load]
Liquid Absorption	: ≤ 0.1 kg/m <sup>2</sup> .h <sup>-1</sup> .s
Impact Power	: ≥ 20 Nm
Adhesion Strength by Tensile Test	: ≥ 1.5 N/ mm <sup>2</sup>

\* The above values are the times given for 20 ±2 C and 50 ± 5% relative humidity environment.  
\* At low temperatures, the time is extended, at high temperatures, the time is shortened.



**R37/38:** Irritates the respiratory system. **R41:** Risk of serious damage to eyes **R43:** May cause sensitization in contact with skin. **S2:** Keep the products out of reach of children. **S22:** Do not breathe dust. **S24/25:** Avoid contact with eyes and skin. **S26:** In case of contact with eyes, rinse immediately with plenty of water and consult a doctor. **S37/39:** Wear suitable protective gloves, eye protection/mask. **S46:** If swallowed, consult a doctor immediately.



# Düzkim repair mortar

THIN / THICK

## DEFINITION:

It is a repair and leveling mortar reinforced with cement-based polymers and chemical additives.

## APPLICATION AREAS:

- In the smoothing and repair of interior and exterior wall and ceiling plasters of buildings.
- On cement-based surfaces
- Repair of aesthetic cracks and gaps in concrete elements
- Repair and plastering of surfaces such as aerated concrete, exposed concrete, prefabricated concrete, briquette brick, etc. in reinforced concrete buildings and structures.
- Used to obtain a smooth and solid surface before the tile coating.

## SURFACE PREPARATION:

The surface to be applied must be clean and clear of all kinds of dirt, oil, construction dust, mold oils, etc. Plastered surfaces should be cleaned with a brush to prevent dust. The application surface must be thoroughly saturated with water to prevent rapid water loss of the material. If rapid water loss is observed in the material during application, precautions must be taken.

## HOW TO APPLY:

In a clean container, 1 bag of Düzkim Repair Mortar (25 kg) is slowly added into 6 -6.5 kg of clean water and mixed with a low-speed mixer until a homogeneous, lump-free mixture is obtained accordingly. The prepared mixture is left to rest for 10 minutes, then mixed again for another one to two minutes and spread evenly over the surface using a steel trowel. Do not add water to fresh mortar during application.

## PRECAUTIONS:

- Application under sun and strong wind should be avoided.
- Application should be done at temperatures between +5°C and +30°C.
- If the surface temperature is above +25°C, the appropriate temperature required for plastering must be waited.
- Plaster should not be applied to surfaces that may be in danger of freezing within 24 hours.
- Never add water or powder to expired mortar.
- After the application is completed, the surface should be kept moist until the mortar is cured.

## STORAGE AND SHELF LIFE:

Under dry and cool storage conditions, the shelf life is 12 months from the date of production in its original packaging.

DÜZGÜNLER KİMYASAL YAPI ÜRÜNLERİ SAN. VE TİC. LTD. ŞTİ. shall not be held responsible for any issues arising from the product being used for purposes other than its intended use.

## CLEANING OF THE TOOLS:

All the tools used in the application should be cleaned with plenty of water.

## CONSUMPTION:

Approximately 1.3 - 1.5 kg/m<sup>2</sup> for 1 mm thickness. Consumption amounts are theoretical values, and we recommend performing a consumption-controlled sample application before application.

## COLOR:

Gray  
Red

Color	: Grey
Water Mixing Ratio	: 6 - 6.5 liters water / 25 kg powder
Applicable Layer Thickness	: Max 5 mm (at a time)
Pot Life	: Max. 60 minutes
Application Temperature	: +5°C to +35°C
Application Thickness	: 1-10 mm (Thin) 5-20 mm (Thick)
Time to Wait Between Coats	: Approximately 3 hours
Time to Put into Use	: 6 hours
Compressive Strength	: ≥ 10 N/mm <sup>2</sup> (after 28 days)
Adhesion Strength	: ≥ 0.5 N/mm <sup>2</sup> (after 28 days)
Chlorine Content	: ≤ 0.05%
Fire Response	: A1



Avoid contact with skin and eyes as it contains cement. Wash the affected areas thoroughly with plenty of water. The product should not be inhaled directly. Use a dust mask when necessary. **R37/38:** Irritates the respiratory system. **R41:** Risk of serious damage to eyes **R43:** May cause sensitization in contact with skin. **S2:** Keep the products out of reach of children. **S22:** Do not breathe dust. **S24/25:** Avoid contact with eyes and skin. **S26:** In case of contact with eyes, rinse immediately with plenty of water and consult a doctor. **S37/39:** Wear suitable protective gloves, eye protection/mask. **S46:** If swallowed, consult a doctor immediately.

\* Technical information is approximate based on +23°C air temperature and 50% relative air humidity.



# Düzkim

## hand and machine plastering

### 25 KG

#### DEFINITION:

It is a cement-based surface plaster with high adhesion performance that can be applied by hand and machine.

#### APPLICATION AREAS:

It is a cement-based surface plaster with high adhesion performance that can be applied by hand and machine.

#### SURFACE PREPARATION:

The surface to be applied must be clean and clear of all kinds of dirt, oil, construction dust, mold oils, etc. Plastered surfaces should be cleaned with a brush to prevent dust. The application surface must be thoroughly saturated with water to prevent rapid water loss of the material. If rapid water loss is observed in the material during application, precautions must be taken. Surface cracks to be applied should be repaired with a suitable repair mortar, and the application should be made according to the setting time of the repair mortar.

#### HOW TO APPLY:

In a clean container, 1 bag of hand and machine plastering (25 kg) is slowly added into 5 -6 kg of clean water and mixed with a low-speed mixer until a homogeneous, lump-free mixture is obtained accordingly. The prepared mixture is left to rest for 5 minutes, then mixed again for another one to two minutes and spread evenly over the surface using a steel trowel for manual applications. In machine applications, it is applied by spraying. Total plaster thickness should not exceed 4 cm. The first layer should be applied at a distance of 1-2 cm. In applications exceeding 2 cm thickness, the second layer can be applied with a thickness of 1-2 cm after the first layer has set.

#### PRECAUTIONS:

- Application under sun and strong wind should be avoided.
- Application should be done at temperatures between +5°C and +35°C.
- If the surface temperature is above +35°C, the appropriate temperature required for the mortar should be waited for.

- Plaster should not be applied to surfaces that may be in danger of freezing within 24 hours.
- Never add water or powder to expired mortar.

#### STORAGE AND SHELF LIFE:

Under dry and cool storage conditions, the shelf life is 12 months from the date of production in its original packaging.

DÜZGÜNLER KİMYASAL YAPI ÜRÜNLERİ SAN. VE TİC. LTD. ŞTİ. shall not be held responsible for any issues arising from the product being used for purposes other than its intended use.

#### CLEANING OF THE TOOLS:

All the tools used in the application should be cleaned with plenty of water.

#### CONSUMPTION:

12-13 kg/m<sup>2</sup> for 1 cm thick plaster application. Consumption amounts are theoretical values, and we recommend performing a consumption-controlled sample application before application.

#### COLOR:

White  
Grey

Color	: Grey
Water Mixing Ratio	: 5-5.5 kg water / 25 kg powder
Material Content	: Contains cement, mineral fillers, and chemical additives.
Water Vapor Permeability Coefficient	: $\mu \leq 25$
Temperature Resistance	: -30 °C / +70 °C
Open Waiting Time	: Max. 20 minutes
Maturation Time	: Min. 5 minutes
Pot life	: 1 hours
Compressive Strength	: $\geq 8$ N/mm <sup>2</sup>
Loose Bulk Density	: $\leq 1600$ kg/m <sup>3</sup>
Fire Response	: A1



Avoid contact with skin and eyes as it contains cement. Wash the affected areas thoroughly with plenty of water. The product should not be inhaled directly. Use a dust mask when necessary. **R37/38**: Irritates the respiratory system. **R41**: Risk of serious damage to eyes **R43**: May cause sensitization in contact with skin. **S2**: Keep the products out of reach of children. **S22**: Do not breathe dust. **S24/25**: Avoid contact with eyes and skin. **S26**: In case of contact with eyes, rinse immediately with plenty of water and consult a doctor. **S37/39**: Wear suitable protective gloves, eye protection/mask. **S46**: If swallowed, consult a doctor immediately.

\* Technical information is approximate based on +21°C air temperature and 50% relative air humidity.



# Düzkim ridge mortar

## DEFINITION:

It is a cement-based, polymer-reinforced adhesive mortar used in the installation of high-stability roof ridge tiles.

## APPLICATION AREAS:

It is used to bond and fix the roof ridge tiles of buildings in order to prevent the deterioration of their color appearance.

## SURFACE PREPARATION:

The surface to be applied must be clean and clear of all kinds of dirt, oil, construction dust, mold oils, etc. Plastered surfaces should be cleaned with a brush to prevent dust. Surfaces requiring repair on the application surfaces should be repaired with appropriate repair mortars at least 3-4 days in advance. The application surface should be moistened with water.

## HOW TO APPLY:

In a clean container, 1 bag of Düzkim Ridge Mortar (25 kg) is slowly added into 6–6.5 liters of clean water and mixed with a low-speed mixer until a homogeneous, lump-free mixture is obtained accordingly. The prepared mixture is left to rest for 5 minutes, then mixed again for another one to two minutes until homogeneous. The prepared mixture should be consumed within 1 hour. The ridges are bonded together with ridge mortar while being placed on the roof keel. The ridge is filled with ridge mortar, leaving no open sides. After 1 hour, the final shape is given with a damp sponge. Do not step on the ridge tiles and applied surfaces until they have completely hardened.

## PRECAUTIONS:

- Application under sun and strong wind should be avoided.
- Application must be done at temperatures between +5°C and +35°C.
- If the surface temperature is above +35°C, the appropriate temperature required for the mortar should be waited for.

- Plaster should not be applied to surfaces that may be in danger of freezing within 24 hours.
- Never add water or powder to expired mortar.

## STORAGE AND SHELF LIFE:

Under dry and cool storage conditions, the shelf life is 12 months from the date of production in its original packaging.

DÜZGÜNLER KİMYASAL YAPI ÜRÜNLERİ SAN. VE TİC. LTD. ŞTİ. shall not be held responsible for any issues arising from the product being used for purposes other than its intended use.

## CLEANING OF THE TOOLS:

All the tools used in the application should be cleaned with plenty of water.

## CONSUMPTION:

Average 600 gr (1 ridge)  
Consumption amounts are theoretical values, and we recommend performing a consumption-controlled sample application before application.

## COLOR:

Red

Grey

Color	: Red / Gray
Water Mixing Ratio	: 6 -6.5 liters water / 25 kg powder
Application Temperature	: +5 to +35 degrees
Mortar resting time	: 5-10 minutes
Dry time	: 24 hours
Scaling time	: Av. 1 hours
Pot life	: 1 hours
Fire response	: A1
Temperature resistance	: -25°C to +70°C



Since it is cement based, do not breathe its dust. Avoid contact with skin and eyes as it contains cement. Wash the affected areas thoroughly with plenty of water. The product should not be inhaled directly. Use a dust mask when necessary. **R37/38**: Irritates the respiratory system. **R41**: Risk of serious damage to eyes **R43**: May cause sensitization in contact with skin. **S2**: Keep the products out of reach of children. **S22**: Do not breathe dust. **S24/25**: Avoid contact with eyes and skin. **S26**: In case of contact with eyes, rinse immediately with plenty of water and consult a doctor. **S37/39**: Wear suitable protective gloves, eye protection/mask. **S46**: If swallowed, consult a doctor immediately.

\* Technical information is approximate based on +21°C air temperature and 50% relative air humidity.



# Düzkim grout mortar

## DEFINITION:

It is a polymer reinforced self-leveling product with high compressive strength used for fixing all kinds of industrial machines and columns such as cast, steel and prefabricated reinforced with special cement-based additives.

## APPLICATION AREAS:

- Indoor and outdoor areas,
- In the assembly of prefabricated concrete building elements,
- In fixing steel columns to the foundation,
- Fixing industrial machines that emit vibration, such as compressors, generators, etc.
- It is used for the repair of manholes and similar areas exposed to heavy pedestrian traffic.fi

## SURFACE PREPARATION:

Before application, surfaces and mounting materials must be cleaned of materials that prevent adhesion such as dust, oil, rust, paint, curing agent, detergent, mold oil and silicone, and saturated with water. In floor applications, the surface to be applied must be cleared of all kinds of waste material.

## HOW TO APPLY:

In a clean container, 1 bag of Düzkim Grout Mortar (25 kg) is slowly added into 3-5 kg of clean water and mixed with a low-speed mixer until a homogeneous, lump-free mixture is obtained accordingly. The prepared mixture is left to rest for 1-2 minutes, then mixed again to become ready for use. The prepared mortar should be poured unidirectionally onto the application area without wasting any time. It must be ensured that no air bubbles remain during the pouring of the mortar. Due to its fluid structure, prolonged and intense vibrator use should not be used. The prepared mortar should be applied within 15 minutes. In surface applications, the first layer is applied up to 4 cm and after the first layer has had its first set for 24 hours, the 2nd layer is applied. Application should be done in layers.

## CONSUMPTION:

- Maximum 8 kg/m<sup>2</sup> for 5 mm thickness (minimum 3 m<sup>2</sup> with 25 kg packaging).
- Product consumption may vary depending on the surface smoothness, slope, and application thickness.fi

## PRECAUTIONS:

- Application under sun and strong wind should be avoided.
- Application should be made in temperatures between +5°C and +35°C.
- If the surface temperature is above +35°C, the appropriate temperature required for plastering must be waited.
- Plaster should not be applied to surfaces that may be in danger of freezing within 24 hours.
- Never add water or powder to expired mortar.

## STORAGE AND SHELF LIFE:

Under dry and cool storage conditions, the shelf life is 12 months from the date of production in its original packaging.

DÜZGÜNLER KİMYASAL YAPI ÜRÜNLERİ SAN. VE TİC. LTD. ŞTİ. shall not be held responsible for any issues arising from the product being used for purposes other than its intended use.

## CLEANING OF THE TOOLS:

All the tools used in the application should be cleaned with plenty of water.

Color	: Grey
Water Mixing Ratio	: 3-5 kg water / 25 kg powder
Material Content	: Cement-based powder
Application temperature	: +5 °C +30 °C
Application thickness	: Min. 10mm Max. 80 mm
Por life	: Max. 20 minutes
Compressive Strength	: ≥ 45 N/mm <sup>2</sup>
Bending strength	: ≥ 8 N/mm <sup>2</sup>
Adhesion Strength	: > 2.0 N/mm <sup>2</sup>
Full cure time	: 28 days
Time to open to traffic	: 24 hours
Fire class	: A1



Since it is cement based, do not breathe its dust. Avoid contact with skin and eyes as it contains cement. Wash the affected areas thoroughly with plenty of water. The product should not be inhaled directly. Use a dust mask when necessary. **R37/38**: Irritates the respiratory system. **R41**: Risk of serious damage to eyes **R43**: May cause sensitization in contact with skin. **S2**: Keep the products out of reach of children. **S22**: Do not breathe dust. **S24/25**: Avoid contact with eyes and skin. **S26**: In case of contact with eyes, rinse immediately with plenty of water and consult a doctor. **S37/39**: Wear suitable protective gloves, eye protection/mask. **S46**: If swallowed, consult a doctor immediately.

\* Technical information is approximate based on +23°C air temperature and 50% relative air humidity.  
\* High temperatures shorten the periods, low temperatures lengthen them.



# Düzkim two-component waterproofing material

A/B COMPONENT FULL ELASTIC 20+10 KG

## DEFINITION:

It is a two-component waterproofing material with a flexible structure reinforced with special additives based on cement and acrylic. It is applied internally and externally on concrete curtains and cement-based plasters against leaks and surface water.

## APPLICATION AREAS:

- Indoor and outdoor areas,
- In wet areas such as bathrooms, toilets and kitchens,
- On terraces and roof systems,
- Foundation insulation and retaining walls,
- Water tanks, swimming and ornamental pools,
- In spas and baths,

## SURFACE PREPARATION:

Before application, surfaces and mounting materials must be cleaned of materials that prevent adhesion such as dust, oil, rust, paint, curing agent, detergent, mold oil and silicone, and saturated with water. In floor applications, the surface to be applied must be cleared of all kinds of waste material.

## HOW TO APPLY:

Acrylic liquid component B is placed in a clean container and component A powder is slowly added and mixed with a low speed mixer. The prepared mixture is obtained in a way that it becomes homogeneous and lump-free.

The prepared mixture should be applied with a brush in two or three layers, horizontally and vertically. The prepared mixture must be applied within 1 hour.

## CONSUMPTION:

- For a thickness of 3 mm, a maximum of 4.5 kg/m<sup>2</sup> (minimum 7 m<sup>2</sup> coverage with a 20 kg powder package and 10 kg acrylic liquid).
- Product consumption may vary depending on the surface smoothness, slope, and application thickness.

## PRECAUTIONS:

- Application under sun and strong wind should be avoided.
- Application should be made in temperatures between +5°C and +35°C.
- If the surface temperature is above +35°C, the appropriate temperature required for plastering must be waited.

- Plaster should not be applied to surfaces that may be in danger of freezing within 24 hours.
- Never add water or powder to expired mortar.

## STORAGE AND SHELF LIFE:

Under dry and cool storage conditions, the shelf life is 12 months from the date of production in its original packaging.

DÜZGÜNLER KİMYASAL YAPI ÜRÜNLERİ SAN. VE TİC. LTD. ŞTİ. shall not be held responsible for any issues arising from the product being used for purposes other than its intended use.

## CLEANING OF THE TOOLS:

All the tools used in the application should be cleaned with plenty of water.

Color	: Gray / White
Water Mixing Ratio	: 10 kg acrylic liquid / 20 kg powder
Material Content	: Cement-based powder + acrylic liquid
Application temperature	: +5 °C + 30 °C
Application thickness	: Min. 1 mm Max. 4 mm
Pot life	: Max. 60 minutes
Full cure time	: 28 days
Time to open to traffic	: 24 hours
Fire class	: A1



Since it is cement based, do not breathe its dust. Avoid contact with skin and eyes as it contains cement. Wash the affected areas thoroughly with plenty of water. The product should not be inhaled directly. Use a dust mask when necessary. **R37/38**: Irritates the respiratory system. **R41**: Risk of serious damage to eyes **R43**: May cause sensitization in contact with skin. **S2**: Keep the products out of reach of children. **S22**: Do not breathe dust. **S24/25**: Avoid contact with eyes and skin. **S26**: In case of contact with eyes, rinse immediately with plenty of water and consult a doctor. **S37/39**: Wear suitable protective gloves, eye protection/mask. **S46**: If swallowed, consult a doctor immediately.

\* Technical information is approximate based on +23°C air temperature and 50% relative air humidity.  
\* High temperatures shorten the periods, low temperatures lengthen them.



# Düzkim two-component waterproofing material

A/B COMPONENT SEMI ELASTIC 20+10 KG

## DEFINITION:

It is a two-component waterproofing material with a flexible structure reinforced with special additives based on cement and acrylic. It is applied internally and externally on concrete curtains and cement-based plasters against leaks and surface water.

## APPLICATION AREAS:

- Indoor and outdoor areas,
- In wet areas such as bathrooms, toilets and kitchens,
- On terraces and roof systems,
- Foundation insulation and retaining walls,
- Water tanks, swimming and ornamental pools,
- In spas and baths,

## SURFACE PREPARATION:

Before application, surfaces and mounting materials must be cleaned of materials that prevent adhesion such as dust, oil, rust, paint, curing agent, detergent, mold oil and silicone, and saturated with water. In floor applications, the surface to be applied must be cleared of all kinds of waste material.

## HOW TO APPLY:

Acrylic liquid component B is placed in a clean container and component A powder is slowly added and mixed with a low speed mixer. The prepared mixture is obtained in a way that it becomes homogeneous and lump-free.

The prepared mixture should be applied with a brush in two or three layers, horizontally and vertically. The prepared mixture must be applied within 1 hour.

## CONSUMPTION:

- For a thickness of 3 mm, a maximum of 4.5 kg/m<sup>2</sup> (minimum 7 m<sup>2</sup> coverage with a 20 kg powder package and 10 kg acrylic liquid).
- Product consumption may vary depending on the surface smoothness, slope, and application thickness.

## PRECAUTIONS:

- Application under sun and strong wind should be avoided.
- Application should be made in temperatures between +5°C and +35°C.
- If the surface temperature is above +35°C, the appropriate temperature required for plastering must be waited.

- Plaster should not be applied to surfaces that may be in danger of freezing within 24 hours.
- Never add water or powder to expired mortar.

## STORAGE AND SHELF LIFE:

Under dry and cool storage conditions, the shelf life is 12 months from the date of production in its original packaging.

DÜZGÜNLER KİMYASAL YAPI ÜRÜNLERİ SAN. VE TİC. LTD. ŞTİ. shall not be held responsible for any issues arising from the product being used for purposes other than its intended use.

## CLEANING OF THE TOOLS:

All the tools used in the application should be cleaned with plenty of water.

Color	: Gray / White
Water Mixing Ratio	: 10 kg acrylic liquid / 20 kg powder
Material Content	: Cement-based powder + acrylic liquid
Application temperature	: +5 °C + 30 °C
Application thickness	: Min. 1 mm Max. 4 mm
Pot life	: Max. 60 minutes
Full cure time	: 28 days
Time to open to traffic	: 24 hours
Fire class	: A1



Since it is cement based, do not breathe its dust. Avoid contact with skin and eyes as it contains cement. Wash the affected areas thoroughly with plenty of water. The product should not be inhaled directly. Use a dust mask when necessary. **R37/38**: Irritates the respiratory system. **R41**: Risk of serious damage to eyes **R43**: May cause sensitization in contact with skin. **S2**: Keep the products out of reach of children. **S22**: Do not breathe dust. **S24/25**: Avoid contact with eyes and skin. **S26**: In case of contact with eyes, rinse immediately with plenty of water and consult a doctor. **S37/39**: Wear suitable protective gloves, eye protection/mask. **S46**: If swallowed, consult a doctor immediately.

\* Technical information is approximate based on +23°C air temperature and 50% relative air humidity.  
\* High temperatures shorten the periods, low temperatures lengthen them.



# Düzkim two-component waterproofing material

A/B COMPONENT FULL ELASTIC 20+5 KG

## DEFINITION:

It is a two-component waterproofing material with a flexible structure reinforced with special additives based on cement and acrylic. It is applied internally and externally on concrete curtains and cement-based plasters against leaks and surface water.

## APPLICATION AREAS:

- Indoor and outdoor areas,
- In wet areas such as bathrooms, toilets and kitchens,
- On terraces and roof systems,
- Foundation insulation and retaining walls,
- Water tanks, swimming and ornamental pools,
- In spas and baths,

## SURFACE PREPARATION:

Before application, surfaces and mounting materials must be cleaned of materials that prevent adhesion such as dust, oil, rust, paint, curing agent, detergent, mold oil and silicone, and saturated with water. In floor applications, the surface to be applied must be cleared of all kinds of waste material.

## HOW TO APPLY:

Acrylic liquid component B is placed in a clean container and component A powder is slowly added and mixed with a low speed mixer. The prepared mixture is obtained in a way that it becomes homogeneous and lump-free.

The prepared mixture should be applied with a brush in two or three layers, horizontally and vertically. The prepared mixture must be applied within 1 hour.

## CONSUMPTION:

- For a thickness of 3 mm, a maximum of 4.5 kg/m<sup>2</sup> (minimum 7 m<sup>2</sup> coverage with a 20 kg powder package and 10 kg acrylic liquid).
- Product consumption may vary depending on the surface smoothness, slope, and application thickness.

## PRECAUTIONS:

- Application under sun and strong wind should be avoided.
- Application should be made in temperatures between +5°C and +35°C.
- If the surface temperature is above +35°C, the appropriate temperature required for plastering must be waited.

- Plaster should not be applied to surfaces that may be in danger of freezing within 24 hours.
- Never add water or powder to expired mortar.

## STORAGE AND SHELF LIFE:

Under dry and cool storage conditions, the shelf life is 12 months from the date of production in its original packaging.

DÜZGÜNLER KİMYASAL YAPI ÜRÜNLERİ SAN. VE TİC. LTD. ŞTİ. shall not be held responsible for any issues arising from the product being used for purposes other than its intended use.

## CLEANING OF THE TOOLS:

All the tools used in the application should be cleaned with plenty of water.

Color	: Gray / White
Water Mixing Ratio	: 5 kg acrylic liquid / 20 kg powder
Material Content	: Cement-based powder + acrylic liquid
Application temperature	: +5 °C + 30 °C
Application thickness	: Min. 1 mm Max. 4 mm
Pot life	: Max. 60 minutes
Full cure time	: 28 days
Time to open to traffic	: 24 hours
Fire class	: A1



Since it is cement based, do not breathe its dust. Avoid contact with skin and eyes as it contains cement. Wash the affected areas thoroughly with plenty of water. The product should not be inhaled directly. Use a dust mask when necessary. **R37/38**: Irritates the respiratory system. **R41**: Risk of serious damage to eyes **R43**: May cause sensitization in contact with skin. **S2**: Keep the products out of reach of children. **S22**: Do not breathe dust. **S24/25**: Avoid contact with eyes and skin. **S26**: In case of contact with eyes, rinse immediately with plenty of water and consult a doctor. **S37/39**: Wear suitable protective gloves, eye protection/mask. **S46**: If swallowed, consult a doctor immediately.

\* Technical information is approximate based on +23°C air temperature and 50% relative air humidity.  
\* High temperatures shorten the periods, low temperatures lengthen them.



# Düzkim two-component waterproofing material

A/B COMPONENT SEMI ELASTIC 20+5 KG

## DEFINITION:

It is a two-component waterproofing material with a flexible structure reinforced with special additives based on cement and acrylic. It is applied internally and externally on concrete curtains and cement-based plasters against leaks and surface water.

## APPLICATION AREAS:

- Indoor and outdoor areas,
- In wet areas such as bathrooms, toilets and kitchens,
- On terraces and roof systems,
- Foundation insulation and retaining walls,
- Water tanks, swimming and ornamental pools,
- In spas and baths,

## SURFACE PREPARATION:

Before application, surfaces and mounting materials must be cleaned of materials that prevent adhesion such as dust, oil, rust, paint, curing agent, detergent, mold oil and silicone, and saturated with water. In floor applications, the surface to be applied must be cleared of all kinds of waste material.

## HOW TO APPLY:

Acrylic liquid component B is placed in a clean container and component A powder is slowly added and mixed with a low speed mixer. The prepared mixture is obtained in a way that it becomes homogeneous and lump-free.

The prepared mixture should be applied with a brush in two or three layers, horizontally and vertically. The prepared mixture must be applied within 1 hour.

## CONSUMPTION:

- For a thickness of 3 mm, a maximum of 4.5 kg/m<sup>2</sup> (minimum 7 m<sup>2</sup> coverage with a 20 kg powder package and 10 kg acrylic liquid).
- Product consumption may vary depending on the surface smoothness, slope, and application thickness.

## PRECAUTIONS:

- Application under sun and strong wind should be avoided.
- Application should be made in temperatures between +5°C and +35°C.
- If the surface temperature is above +35°C, the appropriate temperature required for plastering must be waited.

- Plaster should not be applied to surfaces that may be in danger of freezing within 24 hours.
- Never add water or powder to expired mortar.

## STORAGE AND SHELF LIFE:

Under dry and cool storage conditions, the shelf life is 12 months from the date of production in its original packaging.

DÜZGÜNLER KİMYASAL YAPI ÜRÜNLERİ SAN. VE TİC. LTD. ŞTİ. shall not be held responsible for any issues arising from the product being used for purposes other than its intended use.

## CLEANING OF THE TOOLS:

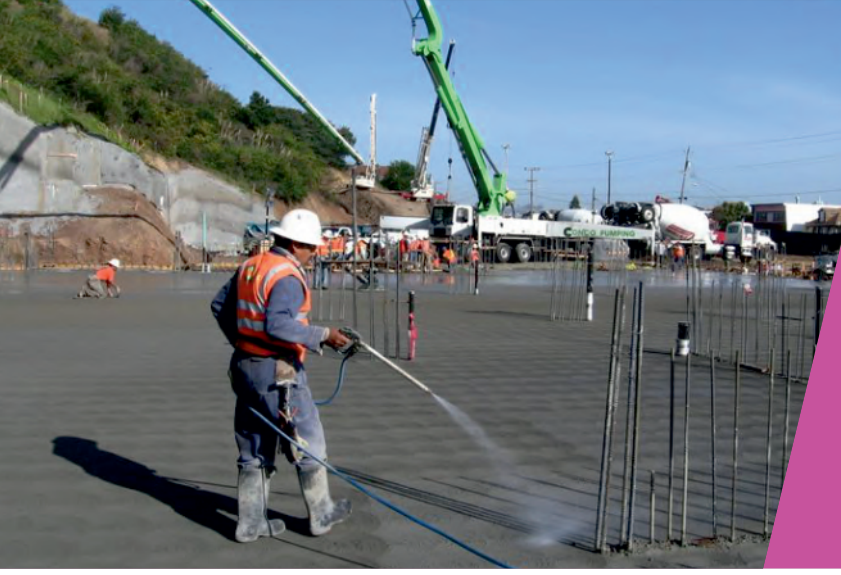
All the tools used in the application should be cleaned with plenty of water.

Color	: Gray / White
Water Mixing Ratio	: 5 kg acrylic liquid / 20 kg powder
Material Content	: Cement-based powder + acrylic liquid
Application temperature	: +5 °C + 30 °C
Application thickness	: Min. 1 mm Max. 4 mm
Pot life	: Max. 60 minutes
Full cure time	: 28 days
Time to open to traffic	: 24 hours
Fire class	: A1



Since it is cement based, do not breathe its dust. Avoid contact with skin and eyes as it contains cement. Wash the affected areas thoroughly with plenty of water. The product should not be inhaled directly. Use a dust mask when necessary. **R37/38**: Irritates the respiratory system. **R41**: Risk of serious damage to eyes **R43**: May cause sensitization in contact with skin. **S2**: Keep the products out of reach of children. **S22**: Do not breathe dust. **S24/25**: Avoid contact with eyes and skin. **S26**: In case of contact with eyes, rinse immediately with plenty of water and consult a doctor. **S37/39**: Wear suitable protective gloves, eye protection/mask. **S46**: If swallowed, consult a doctor immediately.

\* Technical information is approximate based on +23°C air temperature and 50% relative air humidity.  
\* High temperatures shorten the periods, low temperatures lengthen them.



# Düzkim concrete cure

## DEFINITION:

Acrylic emulsion-based, water-based liquid curing material applied over freshly poured concrete surfaces, forming a film layer that prevents rapid water loss in the concrete.

## APPLICATION AREAS:

- On concrete roadsides, bridges,
- In channels and canals,
- In airport and field concretes,
- In concrete applications in places where humidity is low and evaporation is high.

## FEATURES:

- By forming a film layer, it retains moisture inside the concrete and facilitates cement hydration.
- It is more effective and economical than cure methods such as sacking, burlap and irrigation.
- Provides a harder and dust-free surface.
- Reduces shrinkage cracks on the surface caused by rapid drying.
- Penetrates into fresh concrete, does not leave a layer, does not peel off from the surface and does not dust.
- All cement or resin based applications can be done on the cured surface.

- It is water-based and can be used in interior applications.

## PRECAUTIONS:

- Tone differences may occur in non-homogenous applications.
- May be harmful to health in contact with skin.
- Do not apply in weather conditions where there is frost or a risk of frost.
- Protect the applied surface from rain, frost, pedestrian traffic, and high humidity until it is completely dry.
- Do not apply under conditions where the surface and ambient temperature are below +5°C or above +35°C.

## STORAGE AND SHELF LIFE:

Under dry and cool storage conditions, the shelf life is 12 months from the date of production in its original packaging.

DÜZGÜNLER KİMYASAL YAPI ÜRÜNLERİ SAN. VE TİC. LTD. ŞTİ. shall not be held responsible for any issues arising from the product being used for purposes other than its intended use.

## CLEANING OF THE TOOLS:

All the tools used in the application should be cleaned with plenty of water.

## PACKAGING TYPE:

10 kg - 30 kg Drum

Consumption	: 0.200 - 0.300 kg/m <sup>2</sup> in two coats
Appearance color	: White liquid
Density	: 0.95 - 1000 kg/L
Full Drying Time	: 2 - 2.5 hours
Application Temperature	: + 5 °C to + 35 °C





# Düzkim exposed concrete lining

## DEFINITION:

It is a primer material used on exposed concrete surfaces, walls, columns and ceilings, which increases adherence and prepares the surface for coating processes. Düzkim exposed concrete primer reduces the absorbency of the concrete and ensures better adhesion of the coating materials such as cement-based plaster and gypsum to be applied on it.

## APPLICATION AREAS:

- On concrete surfaces before coating on interior and exterior walls
- Protection of raw concrete surfaces, especially on ceiling and floor surfaces, and better adhesion of the material to be applied.
- Better adhesion of plaster and gypsum before plastering.
- Preparing the concrete surface for floor coverings before epoxy and polyurethane coating
- In decorative coating applications, it is applied to the concrete before the coating material that gives the concrete effect.

## FEATURES:

- Increases adherence on the surface
- Prevents dusting
- Balances absorbency
- Easy to apply

## SURFACE PREPARATION:

The surface to be applied must be cleaned of all oil, grease, rust, and paraffin residues; if there are cracks or voids on the surface, they must be repaired with repair mortar.fi

## PRECAUTIONS:

Storage areas are ventilated. During application, appropriate goggles, protective gloves, mask, and work clothing must be worn. In case of contact with skin and eyes, wash immediately with plenty of soap and water. If swallowed, seek medical help immediately. Food and drink materials should not be brought into the application area. Keep out of reach of children.

## HOW TO APPLY:

Depending on the desired consistency, 10% - 20% water is added and mixed with a low-speed mixer for 3-5 minutes. After obtaining a homogeneous mixture without any lumps, the product is applied to the previously prepared surface using a roller. The product should be mixed every 5 minutes during application. Tools and equipment used during application should be cleaned with water.

## STORAGE AND SHELF LIFE:

Under dry and cool storage conditions, the shelf life is 12 months from the date of production in its original packaging.

DÜZGÜNLER KİMYASAL YAPI ÜRÜNLERİ SAN. VE TİC. LTD. ŞTİ. shall not be held responsible for any issues arising from the product being used for purposes other than its intended use.

## CLEANING OF THE TOOLS:

All the tools used in the application should be cleaned with plenty of water.

## PACKAGING TYPE:

- 5 kg bucket
- 12 Kg bucket
- 15 Kg bucket

Consumption	: Depending on the surface, 4-7 m <sup>2</sup> of area is primed with 1 kg in one coat.
Appearance color	: Red
Density	: 1,3 ± 0.02 g/ cm <sup>3</sup>
Dry Time	: 30 min.
Full Drying Time	: 24 hours
Application Temperature	: + 5 °C to + 35 °C





# Düzkim cement mortar additive

## DEFINITION:

It is a ready-to-use liquid concrete and mortar additive that provides water impermeability and does not change the setting time.

## APPLICATION AREAS:

- In structures where water impermeability is required
- Exterior plasters of structures such as water tanks, pools, terrace roofs
- For foundations and retaining walls

## SURFACE PREPARATION:

Before application, surfaces and installation materials must be free from dust, oil, rust, paint, curing compounds, detergents, form release agents, silicone, and other substances that may prevent adhesion.

## HOW TO APPLY:

Mix and shake Düzkim cement mortar additive thoroughly before application. In applications where water impermeability is required, it should be added to the mortar mixing water at a rate of 1/10.

## STORAGE AND SHELF LIFE:

Under dry and cool storage conditions, the shelf life is 12 months from the date of production in its original packaging.

DÜZGÜNLER KİMYASAL YAPI ÜRÜNLERİ SAN. VE TİC. LTD. ŞTİ. shall not be held responsible for any issues arising from the product being used for purposes other than its intended use.

## CLEANING OF THE TOOLS:

All the tools used in the application should be cleaned with plenty of water.

## PACKAGING TYPE:

- 5 Kg Drum
- 10 Kg Drum
- 30 Kg Drum

Color	: White liquid
Water Mixing Ratio	: 10% acrylic liquid
Application temperature	: +5 °C +30 °C



# Düzkim tile primer



## DEFINITION:

It is a single component, ready-to-use, acrylic-based primer material that facilitates the application of new applications on tile applications. It increases the adherence of tile, marble, mosaic, wood and glassy coating materials and enables the application of new coatings.

## APPLICATION AREAS:

- Enables the application of new coating material on tiles.
- Enables the application of new coating material on marble and mosaic.
- Enables the application of new coating material on wooden and glassy coatings.

## FEATURES:

- Provides adherence between surfaces.
- Prevents dusting
- Balances absorbency
- Easy to apply

## SURFACE PREPARATION:

The surface to be applied must be cleaned of all oil, grease, rust, and paraffin residues; if there are cracks or voids on the surface, they must be repaired with repair mortar.

## HOW TO APPLY:

Depending on the desired consistency, 5% - 10% water is added and mixed with a low-speed mixer for 3-5 minutes. After obtaining a homogeneous mixture without any lumps, the product is applied to the previously prepared surface using a roller. The product should be mixed every 5 minutes during application. Tools and equipment used during application should be cleaned with water.

## PRECAUTIONS:

Storage areas are ventilated. During application, appropriate goggles, protective gloves, mask, and work clothing must be worn. In case of contact with skin and eyes, wash immediately with plenty of soap and water. If swallowed, seek medical help immediately. Food and drink materials should not be brought into the application area. Keep out of reach of children.

## STORAGE AND SHELF LIFE:

Under dry and cool storage conditions, the shelf life is 12 months from the date of production in its original packaging.

DÜZGÜNLER KİMYASAL YAPI ÜRÜNLERİ SAN. VE TİC. LTD. ŞTİ. shall not be held responsible for any issues arising from the product being used for purposes other than its intended use.

## CLEANING OF THE TOOLS:

All the tools used in the application should be cleaned with plenty of water.

## PACKAGING TYPE:

- 5 Kg bucket
- 12 Kg bucket
- 15 Kg bucket

Consumption	: Depending on the surface, 4-7 m <sup>2</sup> of area is primed with 1 kg in one coat.
Appearance color	: Red
Density	: 1,3 ± 0.02 g/cm <sup>3</sup>
Dry Time	: 30 min.
Full Drying Time	: 24 hours
Application Temperature	: + 5 °C to + 35 °C





# Düzkim acrylic-based single-component waterproofing material

15 KG

## DEFINITION:

It is an elastomeric acrylic resin/polymer based, UV resistant, single component, elastic waterproofing material.

## APPLICATION AREAS:

- Water tanks, swimming and ornamental pools,
- On sloping terrace roofs,
- In wet areas such as bathrooms, toilets, balconies,
- On the exteriors of silos, warehouses and buildings,
- On reinforced concrete, galvanized sheet, polyurethane foam, zinc, PVC eaves and hidden gutter surfaces, used as an elastic waterproofing material.

## FEATURES:

- Since its flexibility at low temperatures is high, it has a high resistance to long-term cracking.
- Resistance to hail impact (important for terraces).
- Very good adherence even on difficult surfaces.
- Very good protection against carbonation.
- Very good resistance to ponded water passage.
- Applied directly with a brush or roller.

## SURFACE PREPARATION:

Care must be taken to ensure that the application surface is cured. The application surface must be cleared of substances that prevent adhesion such as dust, oil, tar, pitch, paint, silicone, curing agent, detergent and mold oils. The application surface must be saturated with water and kept moist during application. Steep corners should be beveled appropriately.

## HOW TO APPLY:

Each coat should be applied with a brush or roller at a thickness of approximately 1–1.5 mm, with a minimum of two coats. It dries in approximately 4-5 hours depending on weather conditions. The next layer should not be applied before one layer is completely dry. It is recommended to use water insulation mesh or felt between two layers against water pressure or on navigable roofs. It gains mechanical strength after 5 days and becomes waterproof after 7 days. It reaches its final strength after 14 days. Must be protected against punctures and impacts. Tools and equipment used during application should be cleaned with water.

## PRECAUTIONS:

Storage areas are ventilated. During application, appropriate goggles, protective gloves, mask, and work clothing must be worn. In case of contact with skin and eyes, wash immediately with plenty of soap and water. If swallowed, seek medical help immediately. Food and drink materials should not be brought into the application area. Keep out of reach of children.

## STORAGE AND SHELF LIFE:

It should be stored in a dry and cool environment, in its unopened original packaging, protected from frost. Shelf life is 12 months from the date of production under appropriate storage conditions. Opened packages must be tightly closed. DÜZGÜNLER KİMYASAL YAPI ÜRÜNLERİ SAN. VE TİC. LTD. ŞTİ. shall not be held responsible for any issues arising from the product being used for purposes other than its intended use.

## PACKAGING TYPE:

15 Kg bucket

Appearance	: White acrylic copolymer liquid
Liquid Density	: 1.30 kg/lit
Application Temperature	: +5 °C & +35 °C
Elongation at Break	: > 600% 14 days
Capillary Water Absorption and Water Permeability	: w < 0.1 kg / (m <sup>2</sup> .h0,5)
CO <sub>2</sub> Permeability	: CO <sub>2</sub> SD > 50 m
Water Vapor Permeability	: Class I SD < 5
Waiting Time Between Coats	: 4 hours (35°C)
Time to Put into Use	: 5- 7 days
Service Temperature	: -20° C / +80° C

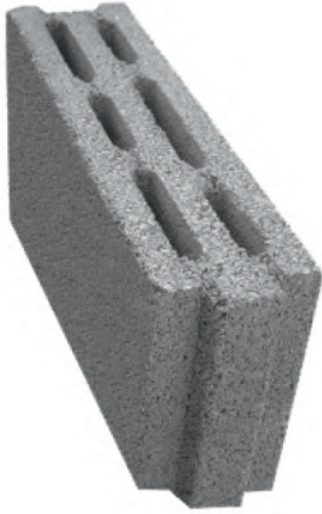




# DÜZ GÜN BİMS

The Power of Your Home





## düz 10-B

Width	mm	100
Length	mm	390
Height	mm	185
Dimension Tolerance Class	-	D1
Compressive Strength (Characteristic)	n/mm <sup>2</sup>	2.00
Gross Dry Unit Volume Masses (Avg.)	kg/m <sup>3</sup>	700.00
Net Dry Unit Volume Masses (Avg.)	kg/m <sup>3</sup>	850.00
Thermal Behavior Property (Max)	w/mK	0.190
Sound Insulation Value	dB	38
Fire Resistance	-	A1
Water Vapor Tension (Max)	kg/m <sup>2</sup> spa	9.00
Consumption per m <sup>2</sup> .fi.	1m <sup>2</sup>	13 pcs.
Half Product	Yes	Yes



## düz 15-B

Width	mm	150
Length	mm	390
Height	mm	185
Dimension Tolerance Class	-	D1
Compressive Strength (Characteristic)	n/mm <sup>2</sup>	1.80
Gross Dry Unit Volume Masses (Avg.)	kg/m <sup>3</sup>	715.00
Net Dry Unit Volume Masses (Avg.)	kg/m <sup>3</sup>	900.00
Thermal Behavior Property (Max)	w/mK	0.210
Sound Insulation Value	dB	42
Fire Resistance	-	A1
Water Vapor Tension (Max)	kg/m <sup>2</sup> spa	9.00
Consumption per m <sup>2</sup> .fi.	1m <sup>2</sup>	13 pcs.
Half Product	Yes	Yes



## düz 20-B

Width	mm	190
Length	mm	390
Height	mm	185
Dimension Tolerance Class	-	D1
Compressive Strength (Characteristic)	n/mm <sup>2</sup>	1.80
Gross Dry Unit Volume Masses (Avg.)	kg/m <sup>3</sup>	650.00
Net Dry Unit Volume Masses (Avg.)	kg/m <sup>3</sup>	840.00
Thermal Behavior Property (Max)	w/mK	0.200
Sound Insulation Value	dB	46
Fire Resistance	-	A1
Water Vapor Tension (Max)	kg/m <sup>2</sup> spa	9.00
Consumption per m <sup>2</sup> .fi.	1m <sup>2</sup>	13 pcs.
Half Product	Yes	Yes



## düz 25-B

Width	mm	200
Length	mm	400
Height	mm	250
Dimension Tolerance Class	-	D1
Compressive Strength (Characteristic)	n/mm <sup>2</sup>	-
Gross Dry Unit Volume Masses (Avg.)	kg/m <sup>3</sup>	431.00
Net Dry Unit Volume Masses (Avg.)	kg/m <sup>3</sup>	911.00
Thermal Behavior Property (Max)	w/mK	0.350
Sound Insulation Value	dB	44
Fire Resistance	-	A1
Water Vapor Tension (Max)	kg/m <sup>2</sup> spa	9.40
Consumption per m <sup>2</sup> .fi.	1m <sup>2</sup>	10 pcs.
Half Product	Yes	Yes



## düz 25-AS

Width	mm	200
Length	mm	400
Height	mm	250
Dimension Tolerance Class	-	D1
Compressive Strength (Characteristic)	n/mm <sup>2</sup>	-
Gross Dry Unit Volume Masses (Avg.)	kg/m <sup>3</sup>	431.00
Net Dry Unit Volume Masses (Avg.)	kg/m <sup>3</sup>	911.00
Thermal Behavior Property (Max)	w/mK	0.350
Sound Insulation Value	dB	44
Fire Resistance	-	A1
Water Vapor Tension (Max)	kg/m <sup>2</sup> spa	9.40
Consumption per m <sup>2</sup> .fi.	1m <sup>2</sup>	10 pcs.
Half Product	Yes	Yes

# DÜZGÜNLER

FUEL and AUTOGAS STATION



